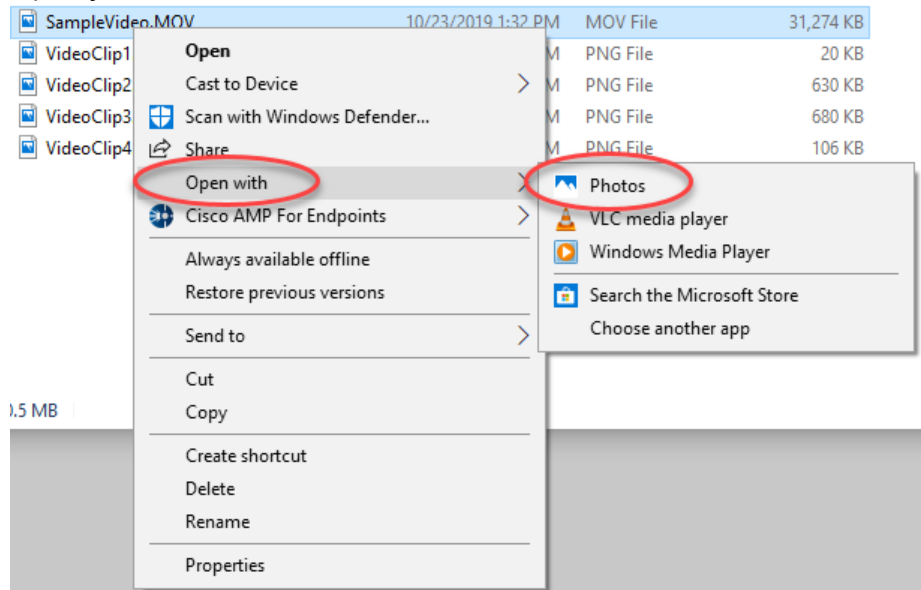


# Using Windows Photos to Block Out Faces in Videos

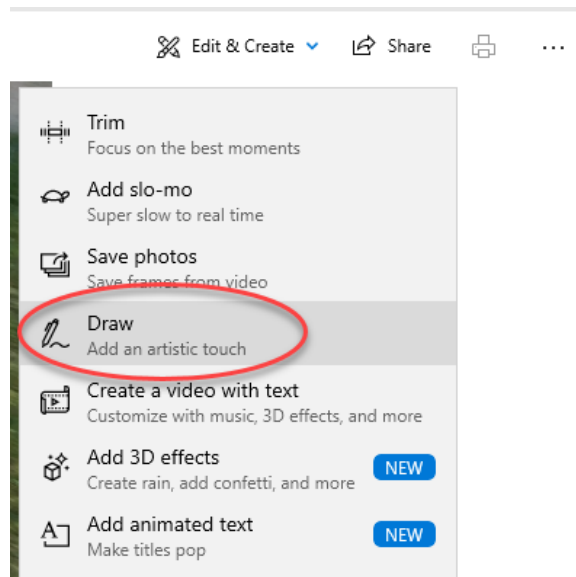
1. Open your video file in Photos.



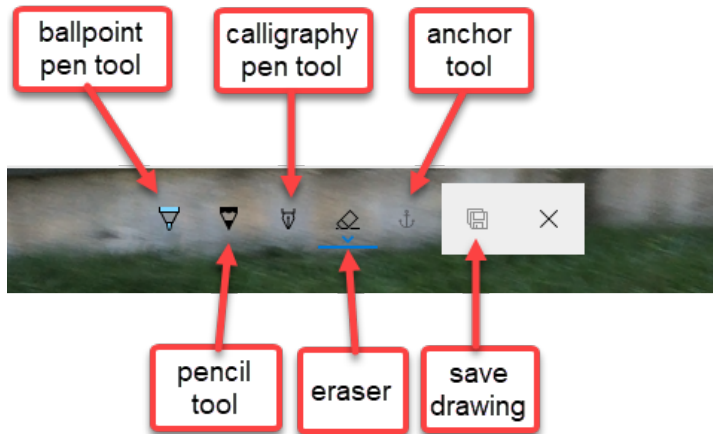
2. Choose Edit & Create in the upper right corner.



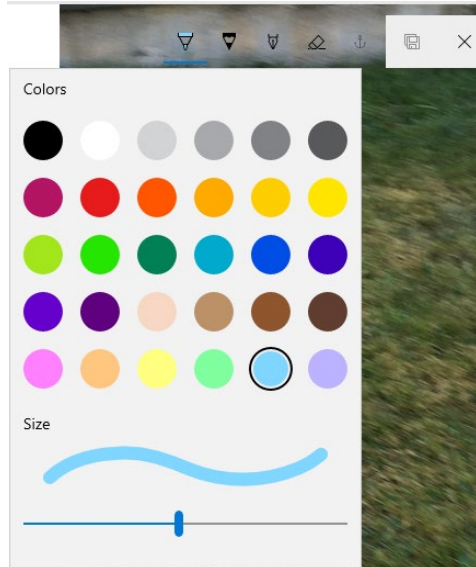
3. Select Draw.



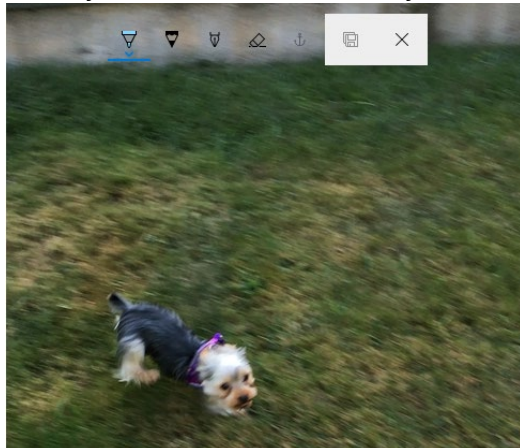
4. The following drawing menu will appear.



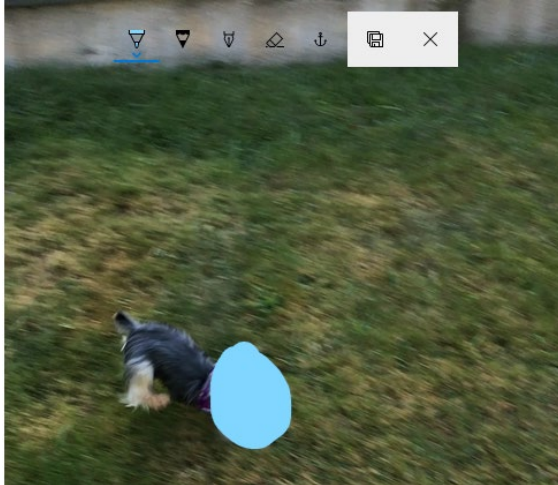
5. Select the ballpoint pen tool and adjust the color and width.



6. Identify the face or information you need to block out.



7. Draw a shape over the face or information you need to block out.



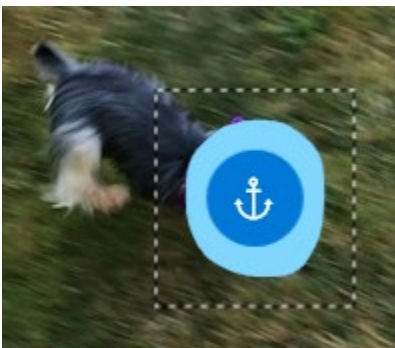
8. Select the anchor tool in the drawing menu.



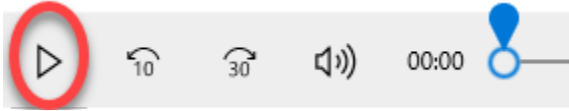
9. An anchor icon will appear over the shape you just drew.



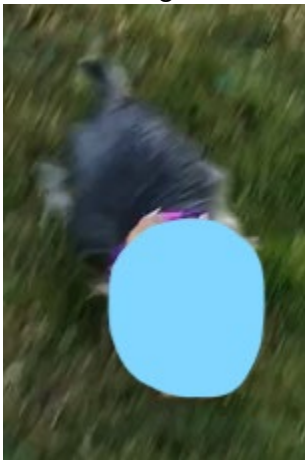
10. Select the anchor to attach the drawing to the person or item in the video. The anchor will turn blue.



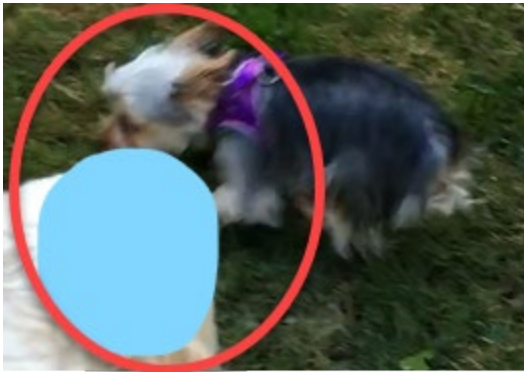
11. Play the video to make sure that you have successfully blocked out the face or information.



12. Your drawing should track the figure on screen so that the face remains covered.



13. If the face you are trying to cover moves a lot in your video, your drawing may not track perfectly, and the face may become visible.



14. If this happens, add another drawing to block out the visible part of the face by following steps 7-11.

15. Make sure to save your changes by selecting the Save button in the drawing menu. You will be prompted to choose a new file name and a destination for the new file.

